

V O L V O



Volvo Excavators

EC380E HYBRID

Volvo Construction Equipment



Welcome to our world

Welcome to a world of industry leading machinery. A world where imagination, hard work and technological innovation will lead the way towards developing a future which is cleaner, smarter, and more connected. A world supported by the enduring values of the Volvo Group. A world of stability, sustainability and innovation. A world which we put our customers at the heart of.

Welcome to the world of Volvo Construction Equipment – we think you're going to like it here.

Working harder, working smarter

For over 180 years Volvo has been a pioneer in the design and manufacture of machines which set the standard for efficiency, performance and uptime. Across our range of excavators, wheel loaders and haulers, our reputation for engineering excellence is unrivalled, which means whatever your operation or application, we can provide a total fleet solution to help you succeed.

Building on our proud history, the Volvo Concept Lab continues to create cutting-edge ideas and innovative concepts, to ensure we offer customers machines which work harder and smarter long into the future.



Solutions for you

Our industry leading machines are just the start of your relationship with Volvo. As your partner, we have developed an extensive range of additional solutions to help you improve uptime, boost productivity and reduce costs.

Designed for your business

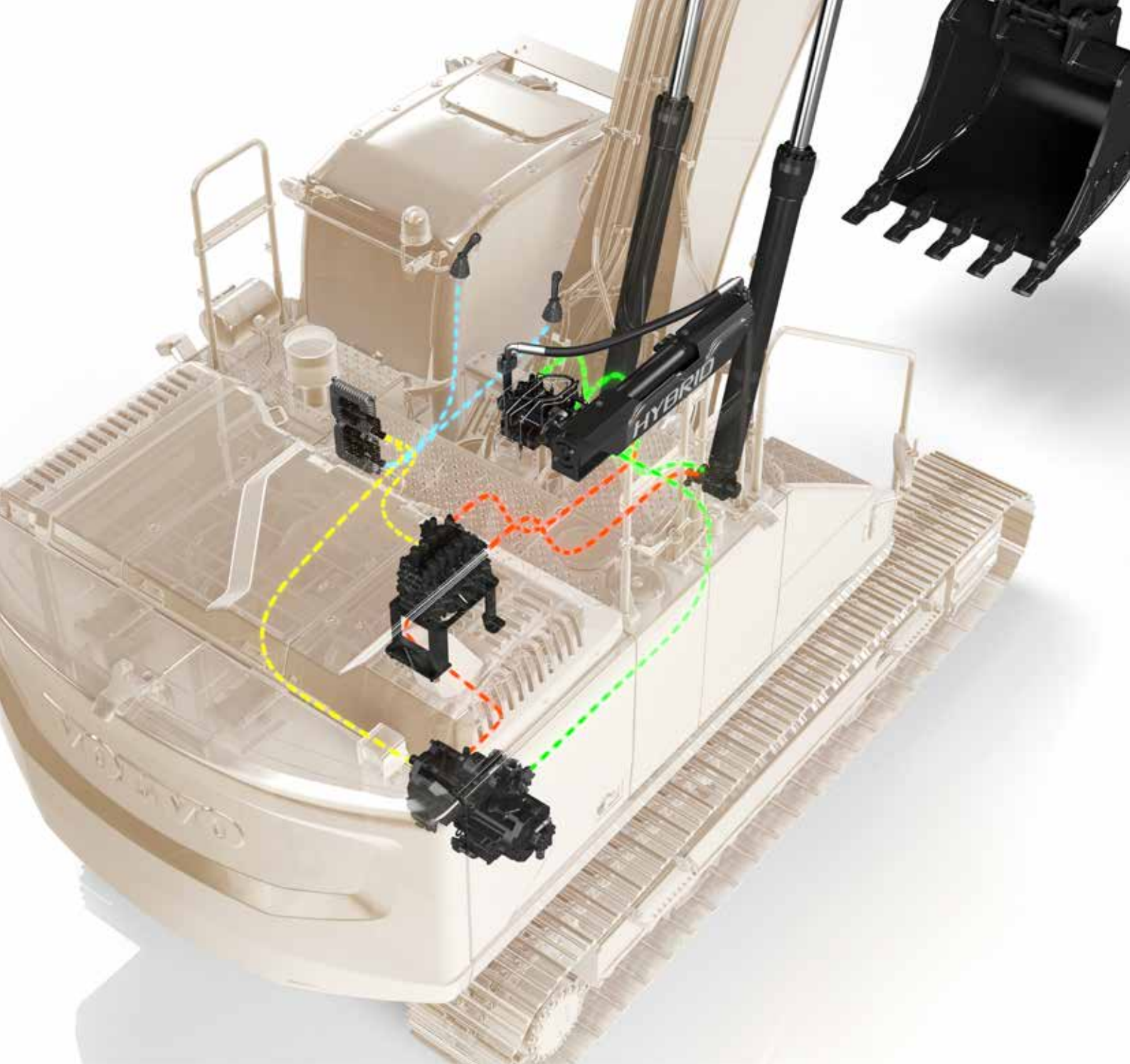
Structured across nine blocks, our portfolio of products and services are designed to complement your machine's performance and boost your profitability. Simply put, we offer some of the best guarantees, warranties and technological solutions in the industry today.

There when you need us

Whether you're buying new or used, our global network of dealers and technicians offer around-the-clock support, including machine monitoring and world-class parts availability. It's the basis of everything offered by Volvo Services, so you can be confident we've got you covered right from the start.



BUILDING TOMORROW



Simple solution, big savings

Introducing the new EC380E Hybrid. Featuring unique hydraulic hybrid Volvo technology, the excavator utilizes the boom down motion to charge the accumulator, with the stored energy used to drive the assist motor, which powers the engine system.

The result is up to 17%* increase in fuel efficiency while delivering all the power and performance you would expect from a conventional EC380E.

*Efficiency and savings may vary based on operator, application and conditions.



17%
greater fuel
efficiency*



15%
lower fuel
consumption*



15%
reduction in CO₂
emissions*



100%
Volvo engineered
hydraulic hybrid



Simply reliable

The uncomplicated and reliable hybrid solution is easy to maintain and consists of just a handful of add-on components, meaning no disruption or complication to how the high performing EC380E is engineered.

Cleaner and greener

The EC380E Hybrid reduces CO₂ emissions by up to 15%* making it a more environmentally respectful choice, especially when working in built-up areas.

Rapid payback

When working in dig and dump applications, the EC380E Hybrid is a straightforward solution with fast payback. Save fuel, lower emissions and boost the profitability of your operation.

EC380E Hybrid in detail

Engine

The latest generation, Volvo engine Stage V emissions certified diesel engine fully meets the demands of the latest, emissions regulations. Featuring Volvo Advanced Combustion Technology (V-ACT), it is designed to deliver superior performance and fuel efficiency. The engine uses precise, high-pressure fuel injectors, turbo charger and air-to-air intercooler, and electronic engine controls to optimize machine performance.

Air Filter: 3-stage with precleaner.

Automatic Idling System: Reduces engine speed to idle when the levers and pedals are not activated resulting in less fuel consumption and low cab noise levels.

Engine	Volvo	D13J
Max power at	r/min	1 700
Net, ISO 9249/SAE J1349	kW	229
	hp	311
Gross, ISO 14396/SAE J1995	kW	230
	hp	313
Max torque	Nm	1 692
at engine speed	r/min	1 275
No. of cylinders		6
Displacement	l	12.8
Bore	mm	131
Stroke	mm	158

Hybrid

The uncomplicated and reliable hybrid solution, Volvo's novel hydraulic hybrid harvests 'free' energy generated by the down motion of the excavator's boom and uses it to supercharge the engine system.

The powerful and regular boom-down motions charge 32 litre hydraulic accumulators (8.5 gallon), which then deliver energy to drive hydraulic assist motors that help power the engine system. There are the same levels of controllability and performance as the standard EC380E, including the ability to work in ECO mode and Hybrid mode simultaneously.

Accumulator

No. of accumulator		1
Displacement	l	32

Electrical System

High-capacity electrical system that is well protected. Waterproof double-lock harness plugs are used to secure corrosion-free connections. The main relays and solenoid valves are shielded to prevent damage. The master switch is standard. Contronics provides advanced monitoring of machine functions and important diagnostic information.

Voltage	V	24
Batteries	V	2 x 12
Battery capacity	Ah	200
Alternator	V/A	28/80

Undercarriage

The undercarriage has a robust X-shaped frame. Greased and sealed track chains are standard.

Track shoes		2 x 50
Link pitch	mm	216
Shoe width, triple grouser	mm	600 / 600HD / 700 / 800 / 900
Shoe width, double grouser	mm	600
Bottom rollers		2 x 9
Top rollers		2 x 2

Cab

The operator's cab has easy access via a wide door opening. The cab is supported on hydraulic dampening mounts to reduce shock and vibration levels. These along with sound absorbing lining provide low noise levels. The cab has excellent all-round visibility. The front windshield can easily slide up into the ceiling, and the lower front glass can be removed and stored in the side door.

Integrated airconditioning and heating system: The pressurized and filtered cab air is supplied by an automatically controlled fan. The air is distributed throughout the cab from 14 vents.

Ergonomic operator's seat: The adjustable seat and joystick console move independently to accommodate the operator. The seat has 12 different adjustments plus a seat belt for the operator's comfort and safety. Refrigerant of the type R134a is used when this machine is equipped with air conditioning. Contains fluorinated greenhouse gas R134a, Global Warming Potential 1430 CO₂-eq.

Swing system

The swing system uses an axial piston motors, driving a planetary gearbox for maximum torque. An automatic holding brake and antirebound valve are standard.

Max. slew speed	r/min	10.2
Max. slew torque	kNm	131

Travel System

Each track is powered by an automatic two-speed shift travel motor. The track brakes are multi-disc, spring-applied and hydraulic released. The travel motor, brake and planetary gears are well protected within the track frame.

Max. drawbar pull	kN	277
Max. travel speed (low)	km/h	3.4
Max. travel speed (high)	km/h	5.3
Gradeability	°	35

Sound Level

Sound pressure level in cab according to ISO 6396

L _{pA}	dB	71
-----------------	----	----

External sound level according to ISO 6395 and EU Noise Directive 2000/14/EC

L _{WA}	dB	105
-----------------	----	-----



Hydraulic system

The new electro-hydraulic system and new MCV (main control valve) use intelligent technology to control on-demand flow for high productivity, high-digging capacity and excellent fuel consumption. The following important functions are included in the system for optimum performance:

Summation system: Combines the flow of both hydraulic pumps to ensure quick cycle times and high productivity.

Boom priority: Gives priority to the boom operation for faster raising when loading or performing deep excavations.

Arm priority: Gives priority to the arm operation for faster cycle times in leveling and for increased bucket filling when digging.

Swing priority: Gives priority to swing functions for faster simultaneous operations.

Regeneration system: Prevents cavitation and provides flow to other movements during simultaneous operations for maximum productivity.

Power boost: All digging and lifting forces are increased.

Holding valves: Boom and arm holding valves prevent the digging equipment from creeping.

Main pump, Type 2 x variable displacement axial piston pumps

Maximum flow	l/min	2 x 300
--------------	-------	---------

Pilot pump, Type Gear pump

Maximum flow	l/min	32.6
--------------	-------	------

Relief value setting pressure

Implement	MPa	32.4/35.3
Travel circuit	MPa	35.3
Slew circuit	MPa	27.9
Pilot circuit	MPa	3.9

Hydraulic Motors

Travel: Variable displacement axial piston motor with mechanical brake.

Slew: Fixed displacement axial piston motor with mechanical brake

Hydraulic Cylinders

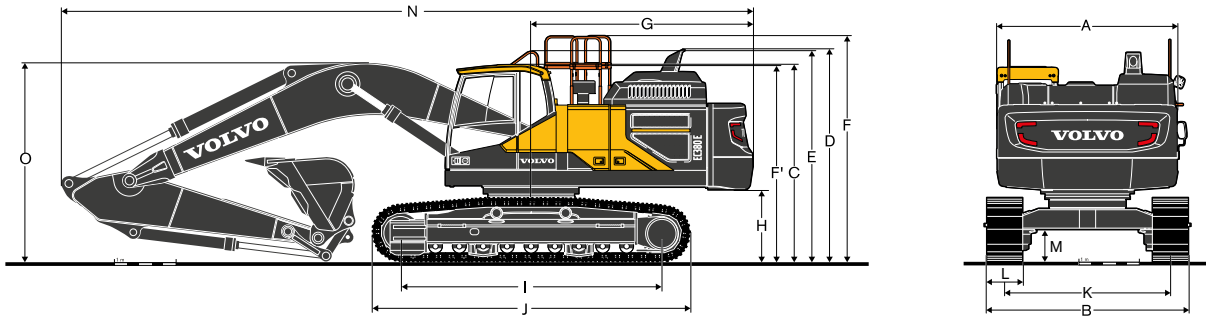
Mono boom		2
Bore x Stroke	ø x mm	160 x 1 530
Arm		1
Bore x Stroke	ø x mm	175 x 1 700
Bucket		1
Bore x Stroke	ø x mm	145 x 1 285
ME Bucket		1
Bore x Stroke	ø x mm	160 x 1 250
Bucket for LR boom		1
Bore x Stroke	ø x mm	140 x 1 140

Service Refill

Fuel tank	l	620
DEF/AdBlue® tank	l	62.5
Hydraulic system, total	l	500
Hydraulic tank	l	225
Engine oil	l	42
Engine coolant	l	60
Slew reduction unit	l	6.5
Travel reduction unit	l	2 x 6.8



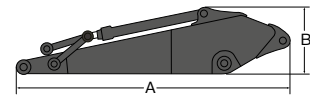
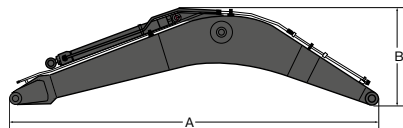
Specifications



DIMENSIONS

Description	Unit	EC380EL Hybrid				EC380ENL Hybrid			
		6.2	6.45			6.2	6.45		
Boom	m	6.2	6.45			6.2	6.45		
Arm	m	2.6	2.6	3.2	3.9	2.6	2.6	3.2	3.9
A. Overall width of upper structure	mm	2 990	2 990	2 990	2 990	2 990	2 990	2 990	2 990
B. Overall width	mm	3 340	3 340	3 340	3 340	2 990	2 990	2 990	2 990
C. Overall height of cab	mm	3 220	3 220	3 220	3 220	3 220	3 220	3 220	3 220
D. Overall height of diffuser	mm	3 465	3 465	3 465	3 465	3 465	3 465	3 465	3 465
E. Overall height of handrail	mm	3 440	3 440	3 440	3 440	3 440	3 440	3 440	3 440
F. Overall height of guardrail (unfolded)	mm	3 685	3 685	3 685	3 685	3 685	3 685	3 685	3 685
F'. Overall height of guardrail (folded)	mm	3 215	3 215	3 215	3 215	3 215	3 215	3 215	3 215
G. Tail swing radius	mm	3 600	3 600	3 600	3 600	3 600	3 600	3 600	3 600
H. Counterweight clearance *	mm	1 150	1 150	1 150	1 150	1 150	1 150	1 150	1 150
I. Tumbler length	mm	4 240	4 240	4 240	4 240	4 240	4 240	4 240	4 240
J. Track length	mm	5 180	5 180	5 180	5 180	5 180	5 180	5 180	5 180
K. Track gauge	mm	2 740	2 740	2 740	2 740	2 390	2 390	2 390	2 390
L. Shoe width	mm	600	600	600	600	600	600	600	600
M. Min. ground clearance *	mm	500	500	500	500	500	500	500	500
N. Overall length	mm	11 060	11 310	11 220	11 270	11 060	11 310	11 220	11 270
O. Overall height of boom	mm	3 610	3 580	3 360	3 605	3 610	3 580	3 360	3 605

* Without shoe grouser

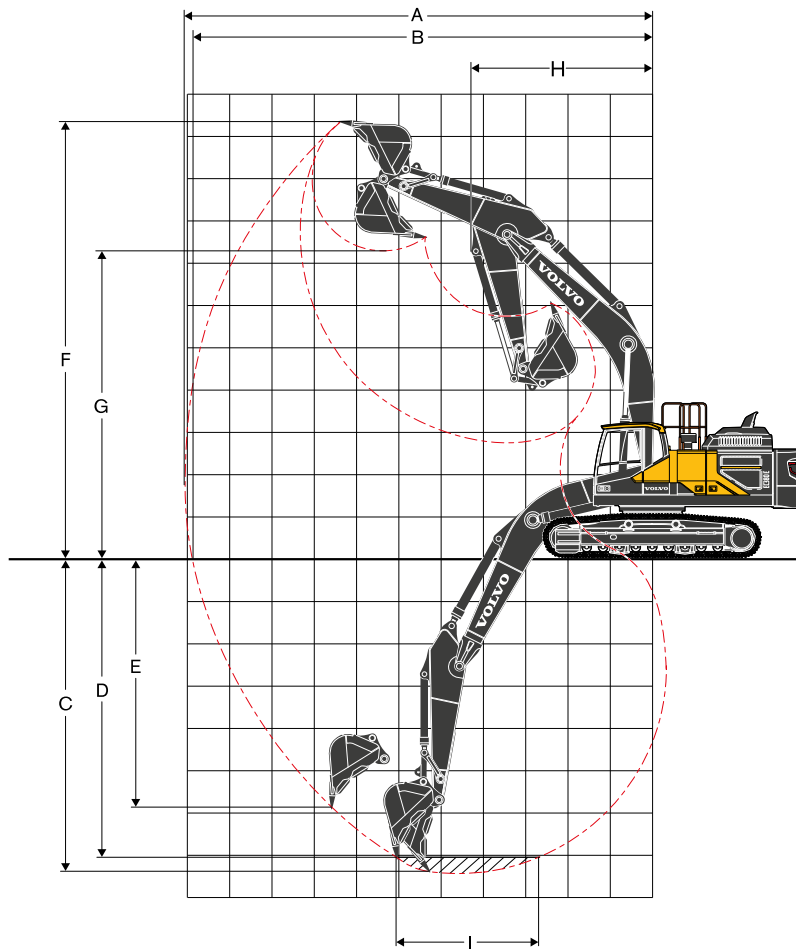


DIMENSIONS

Boom				Arm				
Description	Unit	mono	mono	Description	Unit			
Boom	m	6.2 ME	6.45 HD	Arm	m	2.6	3.2 HD	3.9
A	mm	6 460	6 700	A	mm	3 780	4 360	5 080
B	mm	1 740	1 800	B	mm	1 145	1 145	1 145
Width	mm	820	820	Width	mm	560	560	560
Weight	kg	3 355	3 310	Weight	kg	2 050	2 180	2 300

* Includes arm cylinder, piping and pin

* Includes bucket cylinder, linkage and pin



WORKING RANGE

Description	Unit	EC380E Hybrid			
		6.2	2.6	3.2	3.9
Boom	m	6.2	2.6	3.2	3.9
Arm	m	2.6	2.6	3.2	3.9
A. Max. digging reach	mm	10 450	10 695	11 220	11 855
B. Max. digging reach on ground	mm	10 225	10 480	11 010	11 665
C. Max. digging depth	mm	6 755	6 990	7 590	8 290
D. Max. digging depth (2.44 m level)	mm	6 575	6 805	7 425	8 145
E. Max. vertical wall digging depth	mm	4 860	5 000	5 510	6 110
F. Max. cutting height	mm	10 055	10 195	10 370	10 640
G. Max. dumping height	mm	6 800	6 950	7 140	7 415
H. Min. front slew radius	mm	4 090	4 290	4 280	4 305

DIGGING FORCES WITH DIRECT FIT BUCKET

Breakout force - bucket (Normal/Power boost)	SAE J1179	kN	214.5	198.0	198.0	198.0
	SAE J1179	kN	234.5	215.0	215.0	215.0
	ISO 6015	kN	243.4	221.7	221.7	221.7
	ISO 6015	kN	265.4	242.7	242.7	242.7
	SAE J1179	kN	187.7	195.9	161.9	141.3
Tearout force - dipper arm (Normal/Power boost)	SAE J1179	kN	205.7	212.9	176.9	154.3
	ISO 6015	kN	193.9	201.1	166.0	144.4
	ISO 6015	kN	211.9	219.1	181.0	157.4

Specifications

MACHINE WEIGHTS AND GROUND PRESSURE

Description	Shoe width	Operating weight	Ground pressure	Operating weight	Ground pressure	
	mm	kg	kPa	kg	kPa	
Triple grouser	600	39 825	72.6	39 445	71.9	
	700	40 270	63.0	39 885	62.4	
	800	40 720	55.7	40 335	55.2	
	900	41 165	50.1	40 780	49.6	
Triple grouser(HD)	600	40 255	73.4	39 870	72.7	
Double grouser	600	40 105	73.1	39 720	72.4	
			EC380E Hybrid with LC undercarriage, 6.45 m boom, 3.2 m arm, 1 574 kg bucket, 6 700 kg counterweight		EC380E Hybrid with NLC undercarriage, 6.45 m boom, 3.2 m arm, 1 574 kg bucket, 6 700 kg counterweight	

BUCKET SELECTION GUIDE

Bucket type		Capacity	Cutting width	Weight	Teeth	EC380ENL Hybrid				EC380EL Hybrid			
						600 mm shoe, 6 700 kg counterweight				600 mm shoe, 6 700 kg counterweight			
						6.2 m Boom	6.45 m Boom			6.2 m Boom	6.45 m Boom		
							2.6 m	2.6 m	3.2 m		3.9 m	2.6 m	2.6 m
Direct fit Buckets	General purpose	870	750	1176	3	C	C	C	C	C	C	C	C
		1000	900	1271	4	C	C	C	C	C	C	C	C
		1420	1200	1514	5	C	C	C	C	C	C	C	C
		1670	1350	1629	5	C	C	C	C	C	C	C	C
		1920	1500	1769	5	C	C	C	C	C	C	C	C
	Heavy duty	2330	1750	1986	5	C	C	C	B	C	C	C	B
		1000	900	1425	4	D	D	D	D	D	D	D	D
		1420	1200	1699	5	D	D	D	D	D	D	D	D
		1920	1500	1970	5	D	D	D	C	D	D	D	C
		2330	1750	2175	5	D	D	C	B	D	D	C	B
Direct fit Buckets (UQC interface)	General purpose	870	750	1176	3	C	C	C	C	C	C	C	C
		1000	900	1271	4	C	C	C	C	C	C	C	C
		1420	1200	1514	5	C	C	C	C	C	C	C	C
		1670	1350	1629	5	C	C	C	C	C	C	C	C
		1920	1500	1769	5	C	C	C	B	C	C	C	C
	Heavy duty	2330	1750	1967	5	C	C	B	A	C	C	B	A
		1000	900	1425	4	D	D	D	D	D	D	D	D
		1420	1200	1699	5	D	D	D	D	D	D	D	D
		1920	1500	1970	5	D	D	D	B	D	D	D	B
		2330	1750	2175	5	B	A	X	X	B	B	A	X
Quick coupler Buckets (S3 Quick coupler)	General purpose	1000	900	1239	4	C	C	C	C	C	C	C	C
		1420	1200	1482	5	C	C	C	C	C	C	C	C
		1670	1350	1597	5	C	C	C	C	C	C	C	C
		1920	1500	1720	5	C	C	C	B	C	C	C	C
		2330	1750	1911	5	C	C	C	A	C	C	C	B
	Heavy duty	1000	900	1393	4	D	D	D	D	D	D	D	D
		1420	1200	1648	5	D	D	D	D	D	D	D	D
		1670	1350	1791	5	D	D	D	C	D	D	D	D
		1920	1500	1921	5	D	D	C	B	D	D	D	B
		2330	1750	2119	5	C	C	B	A	C	C	B	A

Please consult with your Volvo dealer for the proper match of buckets and attachments to suit the application.
The recommendations are given as a guide only, based on typical operation conditions.
Bucket capacity based on ISO 7451, heaped material with a 1:1 angle of repose.

X : Not recommended
Maximum material density
A 1 200 - 1 300 kg/m³ Coal, Caliche, Shale
B 1 400 - 1 600 kg/m³ Wet earth and clay, Limestone, Sandstone
C 1 700 - 1 800 kg/m³ Granite, Wet sand, Well blasted rock
D > 1 900 kg/m³ Wet mud, Iron ore

LIFTING CAPACITY EC380EL Hybrid

Lifting capacity at the arm end without bucket.

For lifting capacity including bucket, simply subtract actual weight of the direct fit bucket or the bucket with quick coupler from the following values.

	Lifting hook related to ground level		1.5 m		3.0 m		4.5 m		6.0 m		7.5 m		9.0 m		Max. reach		m
			Along UC	Across UC	Along UC	Across UC	Along UC	Across UC	Along UC	Across UC	Along UC	Across UC	Along UC	Across UC	Along UC	Across UC	
Boom : 6.2m Arm : 2.6m Shoe : 600mm CWT : 6 700kg	7.5 m	kg							*10 700	*10 700					*10 870	10 200	6.7
	6 m	kg							*11 220	*11 220	*10 740	8 420			*10 760	8 080	7.7
	4.5 m	kg					*15 850	*15 850	*12 670	11 620	*11 200	8 250			10 840	7 050	8.3
	3 m	kg					*19 770	16 820	*14 470	11 060	*12 030	8 000			10 120	6 540	8.6
	1.5 m	kg					*22 280	15 990	*15 980	10 600	12 180	7 760			9 950	6 400	8.6
	0 m	kg					*22 820	15 720	*16 750	10 340	12 010	7 600			10 300	6 600	8.3
	-1.5 m	kg			*17 770	*17 770	*22 010	15 740	*16 560	10 280	11 990	7 590			11 370	7 230	7.8
	-3 m	kg			*26 490	*26 490	*19 850	15 980	*15 050	10 430					*12 530	8 690	6.9
	-4.5 m	kg					*15 320	*15 320							*12 280	*12 280	5.4
Boom : 6.45m Arm : 2.6m Shoe : 600mm CWT : 6 700kg	7.5 m	kg													*10 420	9 500	7.0
	6 m	kg							*11 020	*11 020	*10 360	8 460			*10 360	7 660	8.0
	4.5 m	kg					*16 080	*16 080	*12 580	11 570	*10 970	8 250			10 340	6 730	8.5
	3 m	kg							*14 430	10 990	*11 870	7 970			9 680	6 270	8.8
	1.5 m	kg							*15 940	10 530	12 140	7 720			9 520	6 130	8.8
	0 m	kg					*21 850	15 620	*16 690	10 280	11 960	7 560			9 830	6 300	8.6
	-1.5 m	kg			*14 880	*14 880	*21 890	15 660	*16 550	10 220	11 930	7 530			10 770	6 870	8.1
	-3 m	kg			*26 310	*26 310	*19 940	15 890	*15 270	10 350					*12 160	8 130	7.2
	-4.5 m	kg			*20 930	*20 930	*16 070	*16 070							*12 110	11 280	5.8
Boom : 6.45m Arm : 3.2m Shoe : 600mm CWT : 6 700kg	7.5 m	kg									*9 370	8 670			*8 200	*8 200	7.7
	6 m	kg									*9 500	8 600			*7 980	6 920	8.5
	4.5 m	kg					*14 350	*14 350	*11 610	*11 610	*10 260	8 360	*8 790	6 230	*8 060	6 150	9.1
	3 m	kg					*18 440	17 030	*13 580	11 160	*11 290	8 050	9 410	6 100	*8 390	5 760	9.3
	1.5 m	kg					*21 460	16 030	*15 330	10 620	12 190	7 760	9 260	5 960	8 740	5 630	9.4
	0 m	kg					*22 610	15 610	*16 410	10 280	11 950	7 550	9 150	5 870	8 970	5 750	9.1
	-1.5 m	kg			*15 110	*15 110	*22 370	15 530	*16 640	10 150	11 850	7 460			9 690	6 190	8.6
	-3 m	kg	*17 590	*17 590	*23 840	*23 840	*20 970	15 680	*15 880	10 200	11 930	7 520			11 240	7 130	7.8
	-4.5 m	kg			*24 300	*24 300	*17 980	16 050	*13 490	10 470					*11 830	9 270	6.6
Boom : 6.45m Arm : 3.9m Shoe : 600mm CWT : 6 700kg	9 m	kg													*6 920	*6 920	7.2
	7.5 m	kg									*8 160	*8 160			*6 470	*6 470	8.4
	6 m	kg									*8 510	*8 510	*7 680	6 430	*6 310	6 140	9.2
	4.5 m	kg							*10 380	*10 380	*9 380	8 480	*8 850	6 320	*6 370	5 530	9.7
	3 m	kg					*16 410	*16 410	*12 460	11 350	*10 510	8 130	*9 430	6 140	*6 600	5 200	10.0
	1.5 m	kg					*20 040	16 320	*14 440	10 740	*11 650	7 790	9 270	5 960	*7 040	5 080	10.0
	0 m	kg			*9 320	*9 320	*22 030	15 650	*15 870	10 300	11 940	7 530	9 100	5 810	*7 760	5 160	9.8
	-1.5 m	kg	*9 510	*9 510	*14 220	*14 220	*22 500	15 400	*16 510	10 070	11 770	7 370	9 030	5 740	8 590	5 480	9.3
	-3 m	kg	*14 830	*14 830	*20 550	*20 550	*21 740	15 430	*16 250	10 040	11 750	7 360			9 710	6 160	8.6
-4.5 m	kg	*21 190	*21 190	*27 500	*27 500	*19 600	15 700	*14 770	10 190					*11 110	7 590	7.5	
-6 m	kg			*20 790	*20 790	*15 130	*15 130							*11 300	11 300	5.8	
Boom : 6.2m Arm : 2.6m Shoe : 600mm CWT : 7 250kg	7.5 m	kg							*10 700	*10 700					*10 870	10 500	6.7
	6 m	kg							*11 220	*11 220	*10 740	8 680			*10 760	8 340	7.7
	4.5 m	kg					*15 850	*15 850	*12 670	11 970	*11 200	8 520			*10 870	7 280	8.3
	3 m	kg					*19 770	17 340	*14 470	11 420	*12 030	8 260			10 400	6 770	8.6
	1.5 m	kg					*22 280	16 520	*15 980	10 950	12 520	8 020			10 230	6 620	8.6
	0 m	kg					*22 820	16 250	*16 750	10 690	12 350	7 870			10 600	6 830	8.3
	-1.5 m	kg			*17 770	*17 770	*22 010	16 270	*16 560	10 630	12 340	7 850			11 700	7 480	7.8
	-3 m	kg			*26 490	*26 490	*19 850	16 500	*15 050	10 780					*12 530	8 990	6.9
	-4.5 m	kg					*15 320	*15 320							*12 280	*12 280	5.4

Notes: 1. Machine in "Fine Mode-F" (Power Boost) for lifting capacities. 2. The above loads are in compliance with SAE J1097 and ISO 10567 Hydraulic Excavator Lifting Capacity Standards. 3. Rated loads do not exceed 87% of hydraulic lifting capacity or 75% of tipping load. 4. Rated loads marked with an asterisk (*) are limited by hydraulic capacity rather than tipping load.

Specifications

LIFTING CAPACITY EC380EL Hybrid

Lifting capacity at the arm end without bucket.

For lifting capacity including bucket, simply subtract actual weight of the direct fit bucket or the bucket with quick coupler from the following values.

	Lifting hook related to ground level	1.5 m		3.0 m		4.5 m		6.0 m		7.5 m		9.0 m		Max. reach		m	
		Along UC	Across UC	Along UC	Across UC	Along UC	Across UC	Along UC	Across UC	Along UC	Across UC	Along UC	Across UC	Along UC	Across UC		
Boom : 6.45m Arm : 2.6m Shoe : 600mm CWT : 7 250kg	7.5 m	kg													*10 420	9 790	7.0
	6 m	kg						*11 020	*11 020	*10 360	8 720				*10 360	7 900	8.0
	4.5 m	kg					*16 080	*16 080	*12 580	11 920	*10 970	8 510			*10 480	6 950	8.5
	3 m	kg							*14 430	11 340	*11 870	8 240			9 950	6 480	8.8
	1.5 m	kg							*15 940	10 880	12 490	7 990			9 800	6 350	8.8
	0 m	kg					*21 850	16 140	*16 690	10 630	12 310	7 830			10 120	6 530	8.6
	-1.5 m	kg			*14 880	*14 880	*21 890	16 190	*16 550	10 570	12 280	7 800			11 090	7 110	8.1
	-3 m	kg			*26 310	*26 310	*19 940	16 410	*15 270	10 700					*12 160	8 410	7.2
	-4.5 m	kg			*20 930	*20 930	*16 070	*16 070							*12 110	11 650	5.8
Boom : 6.45m Arm : 3.2m Shoe : 600mm CWT : 7 250kg	7.5 m	kg								*9 370	8 930			*8 200	*8 200	7.7	
	6 m	kg								*9 500	8 860			*7 980	7 140	8.5	
	4.5 m	kg					*14 350	*14 350	*11 610	*11 610	*10 260	8 620	*8 790	6 450	*8 060	6 360	9.1
	3 m	kg					*18 440	17 560	*13 580	11 510	*11 290	8 310	9 680	6 320	*8 390	5 960	9.3
	1.5 m	kg					*21 460	16 560	*15 330	10 970	*12 280	8 020	9 530	6 170	8 990	5 830	9.4
	0 m	kg					*22 610	16 130	*16 410	10 630	12 300	7 810	9 420	6 080	9 240	5 960	9.1
	-1.5 m	kg			*15 110	*15 110	*22 370	16 060	*16 640	10 500	12 200	7 720			9 980	6 410	8.6
	-3 m	kg	*17 590	*17 590	*23 840	*23 840	*20 970	16 200	*15 880	10 550	*12 270	7 790			*11 520	7 380	7.8
	-4.5 m	kg			*24 300	*24 300	*17 980	16 570	*13 490	10 820					*11 830	9 580	6.6
Boom : 6.45m Arm : 3.9m Shoe : 600mm CWT : 7 250kg	9 m	kg												*6 920	*6 920	7.2	
	7.5 m	kg								*8 160	*8 160			*6 470	*6 470	8.4	
	6 m	kg								*8 510	*8 510	*7 680	6 640	*6 310	*6 310	9.2	
	4.5 m	kg							*10 380	*10 380	*9 380	8 740	*8 850	6 530	*6 370	5 720	9.7
	3 m	kg					*16 410	*16 410	*12 460	11 710	*10 510	8 400	*9 430	6 360	*6 600	5 380	10.0
	1.5 m	kg					*20 040	16 850	*14 440	11 090	*11 650	8 060	9 540	6 170	*7 040	5 260	10.0
	0 m	kg			*9 320	*9 320	*22 030	16 170	*15 870	10 650	12 290	7 790	9 370	6 020	*7 760	5 350	9.8
	-1.5 m	kg	*9 510	*9 510	*14 220	*14 220	*22 500	15 930	*16 510	10 420	12 120	7 640	9 300	5 960	8 850	5 680	9.3
	-3 m	kg	*14 830	*14 830	*20 550	*20 550	*21 740	15 960	*16 250	10 390	12 100	7 620			9 990	6 390	8.6
-4.5 m	kg	*21 190	*21 190	*27 500	*27 500	*19 600	16 220	*14 770	10 550					*11 110	7 850	7.5	
-6 m	kg			*20 790	*20 790	*15 130	*15 130							*11 300	*11 300	5.8	

Notes: 1. Machine in "Fine Mode-F" (Power Boost) for lifting capacities. 2. The above loads are in compliance with SAE J1097 and ISO 10567 Hydraulic Excavator Lifting Capacity Standards. 3. Rated loads do not exceed 87% of hydraulic lifting capacity or 75% of tipping load. 4. Rated loads marked with an asterisk (*) are limited by hydraulic capacity rather than tipping load.

Equipment

STANDARD EQUIPMENT

Engine

Turbocharged, 4 stroke diesel engine with water cooling, direct injection and charged air cooler that meets EU Stage V requirements

Air filter with indicator

Air intake heater

Cyclone pre-cleaner

Electric engine shut-off

Fuel filter and water separator

Fuel filler pump: 50 l/min, with automatic shut-off

Alternator, 80 A

Hybrid

Accumulator, 32 L

Boom regeneration valves

Assist motor

Main pump with PTO

Electric / Electronic control system

Contronics

Advanced mode control system

Self-diagnostic system

Machine status indication

Engine speed sensing power control

Automatic idling system

One-touch power boost

Safety stop/start function

Adjustable 8inch LCD color monitor

Master electrical disconnect switch

Engine restart prevention circuit

High-capacity halogen lights:

Frame-mounted 2

Boom-mounted 2

Batteries, 2 x 12 V / 200 Ah

Start motor, 24 V / 7 kW

Frame

Access way with handrail

Tool storage area

Punched metal anti-slip plates

Undercover (heavy-duty)

Undercarriage

Undercover (heavy-duty)

Hydraulic track adjusters

Greased and sealed track link

Track Guard

Hydraulic system

Hose rupture valve: boom

Overload warning device

Automatic sensing hydraulic system

2-pump flow bucket circuit

Summation system

Boom priority

Arm priority

Swing priority

ECO mode fuel saving technology

Boom, arm and bucket regeneration valves

Swing anti-rebound valves

Boom and arm holding valves

Multi-stage filtering system

Cylinder cushioning

Cylinder contamination seals

Auxiliary hydraulic valve

Automatic two-speed travel motors

Hydraulic oil, ISO VG 46

STANDARD EQUIPMENT

Cab and interior

ROPS (ISO12117-2) certified cab

Silicon oil and rubber mounts with spring

Travel pedals and hand levers

Adjustable operator seat and joystick control console

Control joysticks with 4 switches each

Heater & air-conditioner, automatic

Flexible antenna

AM/FM stereo with MP3, USB and bluetooth input

Hydraulic safety lock lever

Cab, all-weather sound suppressed, includes:

Cup holders

Door locks

Tinted glass

Floor mat

Horn

Large storage area

Pull-up type front window

Removable lower windshield

Seat belt

Safety glass

Sun screens, front, roof, rear

Rain shield

Windshield wiper with intermittent feature

Rear view camera

Master key

Track shoes

600 mm with triple grousers

Digging equipment

Boom: 6.45 m HD

Arm: 3.2 m HD

Manual centralized lubrication

Equipment

OPTIONAL EQUIPMENT

Engine

Block heater: 120 V, 240 V

Oil bath pre-cleaner

Diesel coolant heater, 10 kW

Water separator with heater

Auto engine shutdown

Delayed engine shutdown

Electric

Extra work lights: Halogen/LED

Cab-mounted 3

Boom-mounted 2

Counterweight-mounted 1

Green light beacon

Travel alarm

Anti-theft system

Rotating warning beacon

Undercarriage

Full track guard

Hydraulic system

Hose rupture valve: arm

Boom float function

Hydraulic piping:

Work tool management system (up to 20 programmable memories)

Hammer & shear, 1 and 2 pump flow

Hammer & shear:

variable flow and pressure pre-setting

Additional return filter

Slope & rotator

Grapple

Oil leak (drain) line

Quick coupler piping

Volvo hydraulic quick coupler S3

Volvo hydraulic quick coupler VQC-HU

Volvo hydraulic quick coupler DR38

Hydraulic oil, ISO VG 32

Hydraulic oil, ISO VG 46

Hydraulic oil, ISO VG 68

Hydraulic oil, biodegradable 46

Hydraulic oil, longlife oil 32

Hydraulic oil, longlife oil 46

Hydraulic oil, longlife oil 68

OPTIONAL EQUIPMENT

Counterweight

6 200 kg, 6 700 kg, 7 250 kg, 8 200 kg LR

Cab and interior

Fabric seat with heater

Fabric seat with heater and air suspension

Deluxe seat

High-strength one piece front windshield (P5A)

Pilot control pattern change

Opening top hatch

Falling object guard (FOG)

Frame-mounted

Cab-mounted

Cab-mounted falling object protective structure (FOPS)

Volvo smart view

Smoker kit (ashtray and lighter)

Safety net for front window

Lower wiper with intermittent control

Anti-vandalism kit

Specific key

Track shoes

Track shoes 600/700/800/900 mm with triple grousers

Track shoes 600 mm HD with triple grousers and HD links

Track shoes 600 mm with double grousers

Digging equipment

Boom: 6.2 m ME, 8.5 m LR

Arm: 2.6 m ME, 3.9 m HD, 5.0 m LR

Linkage with lifting eye

Machine controls

Dig Assist

Please refer to separate Brochure for more details

Service

Tool kit, daily maintenance

Tool kit, full scale

Automatic lubrication system

Air compressor

SELECTION OF VOLVO OPTIONAL EQUIPMENT

Dig Assist



Air gun



Deluxe seat



Volvo Smart View



High-strength one-piece front windshield



Demolition package



Not all products are available in all markets. Under our policy of continuous improvement, we reserve the right to change specifications and design without prior notice. The illustrations do not necessarily show the standard version of the machine.

V O L V O